



## Squirrel Lodge Spring 1 2019 Topic -Nursery Rhymes/Chinese New Year



Dear Parents/ Carers,

This is an overview of what the children in Squirrel Lodge will be learning during the first half of the Spring Term.

### **Mark making/Writing/Physical Development**

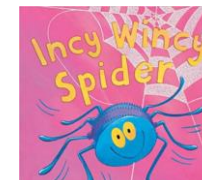
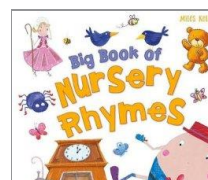
The children will be mark making both indoor and outdoor. The children will be using different media such as pencil crayons, felt tip pens, chalks and paints. We will be encouraging the children to grip the different pencils correctly. The children will be painting and drawing pictures of their favourite nursery rhymes including Miss Polly had a Dolly, Incy Wincy Spider and The Wheels on the Bus.

### **Time to Talk**

The children will continue to participate in our Time to Talk sessions. This will help the children develop their vocabulary.

### **Reading**

The children will be reading lots of different Nursery Rhyme books and books about the Chinese New Year.



### **Communication and Language**

This term we will be teaching the children words that rhyme. Please encourage your child to repeat rhyming words when you are singing different nursery rhymes.

### **Book sharing**

Each child in Squirrel Lodge can choose a book each week to share with family members. Please will you encourage your child to talk about the pictures in their book and turn the pages correctly.

### **Mathematics**

This term we will continue to focus on recognising and counting numbers 1 to 5. We will begin to look at basic 2d shapes such as a circle, square, triangle and rectangle. We will also be encouraging the children to match objects to numbers.

### **Personal, Social and Emotional Development-School Values**

As part of our school values we will be focusing on being kind. The children will be encouraged to take turns and share with their friends.

### **Wet and cold weather**

Can you please send your child to school with wellies and appropriate outdoor clothing, including gloves, hats and coats. During the spring term, the children will be exploring frost, rain and snow. We will be talking about melting and freezing.

### **Understanding the World**

The children will be visiting Bob's Garden to explore the outdoor environment. They will be looking at changes that take place during the winter season. We will learn about the Chinese New Year and their Chinese New Year animals.

### **ICT**

You can access lots of nursery rhymes on You tube or the Cbeebies website:  
<https://www.bbc.co.uk/cbeebies/curations/nursery-rhymes>

### **Being Imaginative and Music**

This term our role play in the classroom will be a home corner. In the outdoor area the children can role play in the pizza café. In our music area the children can experiment with musical instruments and sing on the stage area. If your child has a favourite song they like to sing and dance to please let us know.